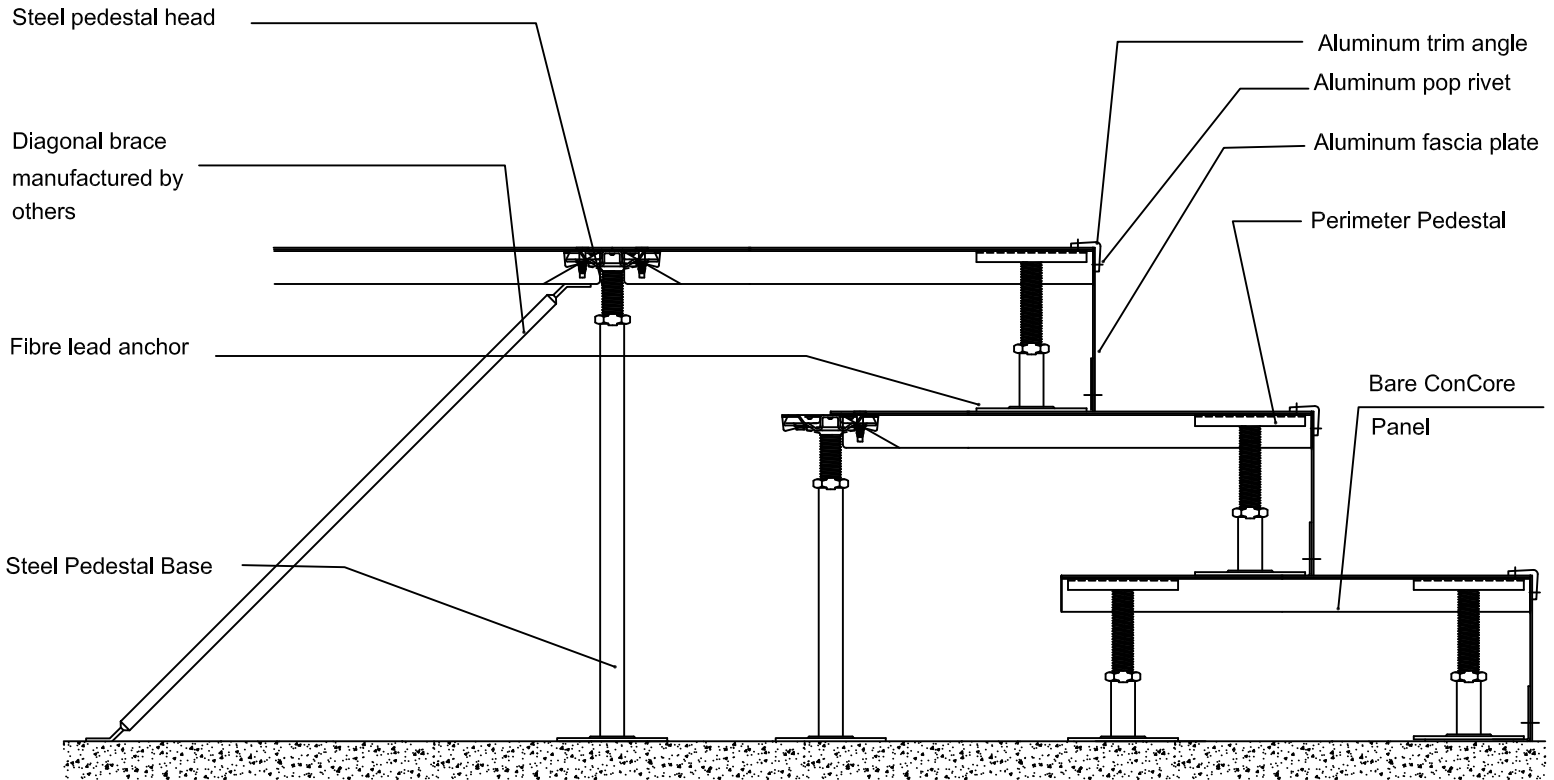


# Step Detail

## STEP CONSTRUCTION

Tate Access Floors, Inc.  
7510 Montevideo Road  
Jessup, MD 20794  
Tel (410) 799-4200  
Fax (410) 799-4207

**Tate**<sup>®</sup>



### Steps

*Note: Check local building codes to determine whether steps may be built with access floor materials. In some areas, unitized (preformed) steps may be required to comply. Tate does not provide one-unit step assemblies.*

### Recommendations for building steps with access floor materials

1. Limit the overall height of the step assembly to three risers.
2. The panels in the first and second steps should be attached to the subfloor with diagonal braces.
3. Keep the width of the assembly in two feet increments if possible to allow for uncut panels to be used (cut panels are inherently weaker).
4. Verify allowable step tread and riser dimensions with local code officials. As a guide, use a step tread of 12" and a riser height of 6". All risers should be the same height.
5. Cover treads with non-slip floor covering.